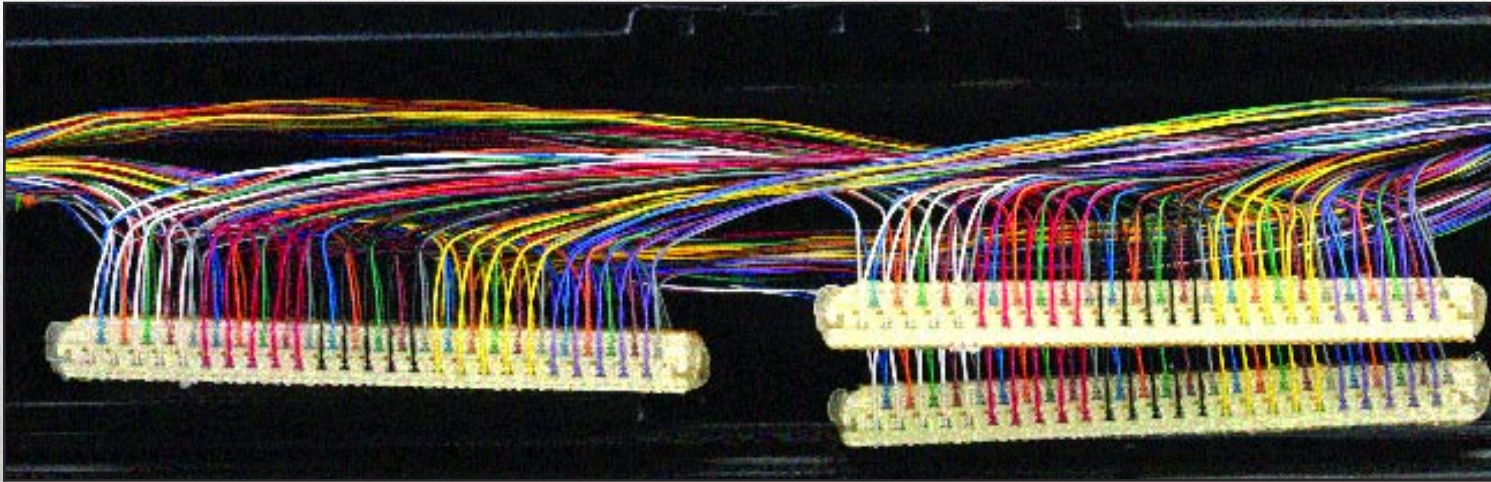
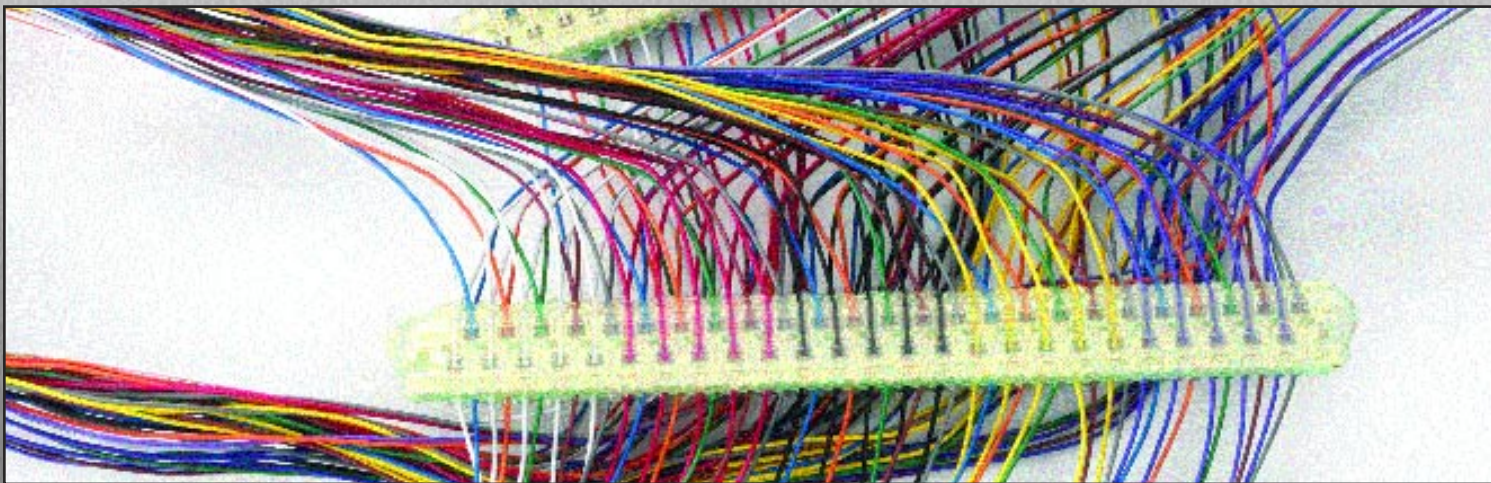




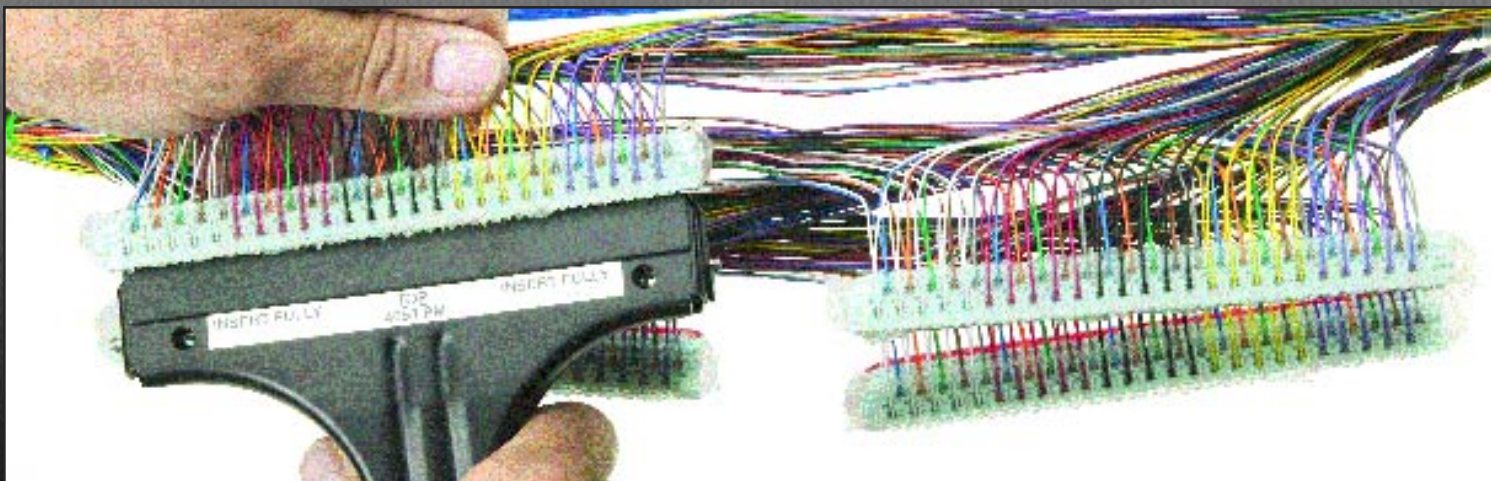
MS²™ Super-Mini Connector Module 4000-G/TR

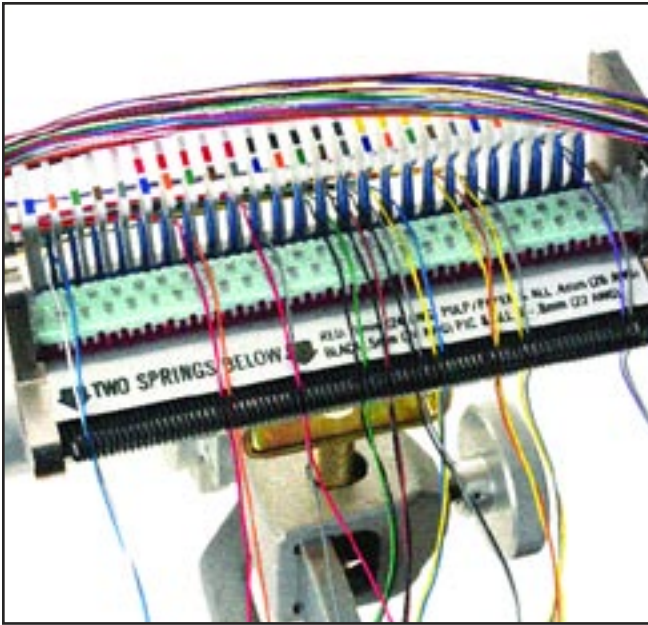


MS²™ Super-Mini Half-Tap Connector Module 4008-G/



MS²™ Super-Mate Bridge Module 4005-GBM/TR





A Complete System for a Changing Industry

In 1976, 3M introduced a series of connector modules to meet increasing needs within the telecommunications industry. Today, the demand for high speed and bandwidth networks is greater than ever, and the complete series of 3M connector modules, tools and test equipment has evolved again to meet these requirements.

Every day, local loop providers feel the pressure for enhanced customer services such as data access with faster Internet transmission, video-on-demand, and video conferencing. Many are deploying DSL, ADSL and VDSL over Category 5 (Cat. 5) twisted pair copper cable to meet these demands. As new technologies migrate into the local loop, the integrity of the connection in the embedded plant has increased. Now, each splice connection could represent a potential point of failure in high-bandwidth applications, requiring the dispatch of a technician to repair the connection. That is where the benefits of 3M connector modules come into play.

Reliable Moisture Protection From Three Gel-Sealed, Super-Mini/Mate Connector Modules.

3M™ MS²™ Splicing Modules 4000/4005/4008 Series have earned the reputation as a world leader in performance and quality for both water immersion protection and high humidity performance. Filled with a moisture resistant gel sealant for protection, all three of these modules are the result of 3M's continuing commitment to innovation. The 3M™ MS²™ Super-Mini Connector Module 4000-G/TR and 3M™ MS²™ Super-Mate Bridge Module 4005-GBM/TR meet TIA/EIA 568-A Cat. 5 transmission requirements and ISO/EIC 11801:1995 requirements for high-speed connectors.

An adapter plate must be used with all Super-Mini Modules. 3M™ Super-Mini Covers and Bases cannot be reused after crimping. Bridging is accomplished with the 4005-GBM/TR.

3M MS² Super-Mini Connector Module 4000-G/TR

The 4000-G/TR connector module accepts a large variety of insulation and conductor diameters: 22-28 AWG (0.63 mm – 0.32 mm). The small size of the 4000-G/TR connector module allows splice bundles to be smaller, improving housekeeping and reducing the costs associated with larger diameter closures.

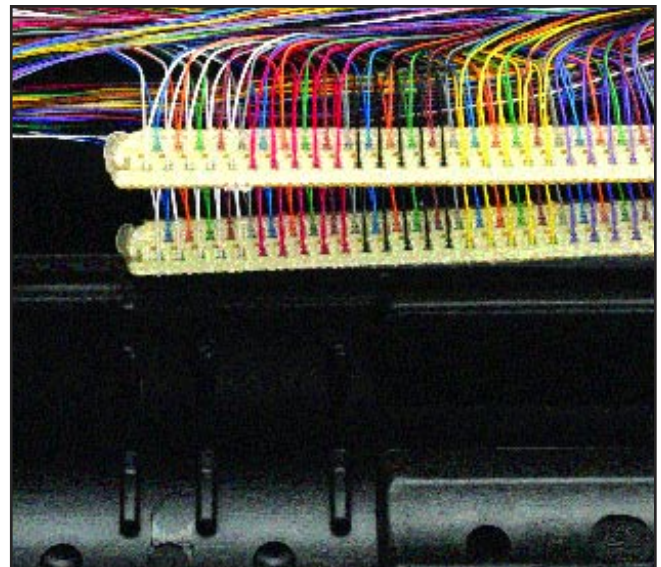
3M™ MS²™ Super-Mini Half-Tap Connector Module 4008-G/TR

The 4008-G/TR accommodates the same wire range as the 4000-G/TR and is similar in all other ways except that the cut-off blades have been eliminated from the bottom of the modules. This allows through wires to be half-tapped without cutting the conductors.

3M MS² Super-Mate Bridge Module 4005-GBM/TR

The gel filled 4005-GBM/TR can terminate up to 25 conductor pairs and forms a moisture protected connection with other MS² Modules such as the Super-Mini Connector Module 4000-G/TR, the Super-Mini Half-Tap Module 4008-G/TR or with another Super-Mate Bridge Module 4005-GBM/TR. It accommodates the same wire range as the 4000-G/TR and 4008-G/TR and has two-plug capabilities: top and bottom. Moisture protection is not reliably provided when the red insulator is unplugged and subsequently replugged back onto the bottom of a module 4005-GBM/TR. The Super-Mate Module will accommodate solid copper conductors: 22-28 AWG (0.63-0.32 mm), PIC insulation with a maximum O.D. of .053" (1.35 mm).

3M Super-Mate Bridge Modules are Telcordia/Bellcore compliant and can withstand extended exposure to various conditions of extremely high moisture, including water immersion and high humidity, while maintaining insulation resistance and circuit integrity.



3M™ MS2™ Connector Modules 4000/4005/4008 Series Features and Benefits

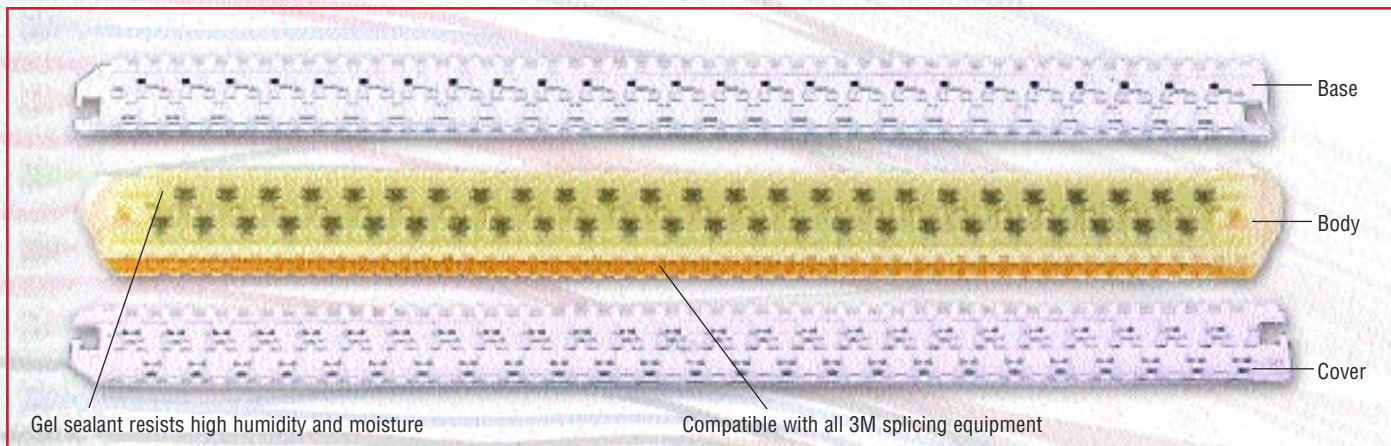
Features

New gel sealant technology
 Compliant with Cat. 5 requirements*
 Compatible with all 3M splicing equipment
 U-shaped contacts
 Front-side test entry ports
 Clear module covers and bases
 Craft-friendly design

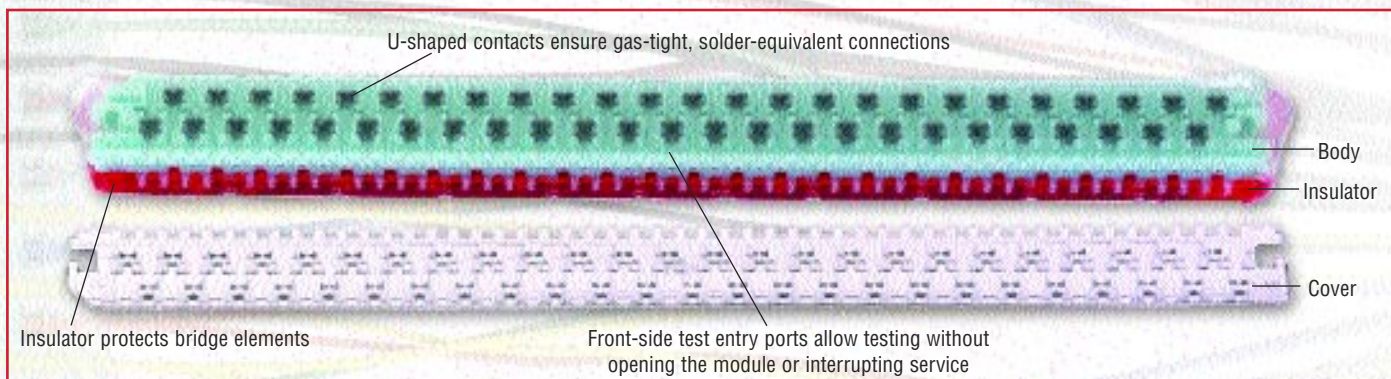
Benefits

Resists high humidity and environmental elements
 High-speed and high-bandwidth transmissions
 Reduces installation time and reworking demands
 Gas-tight, solder-equivalent connections
 Enables testing without opening the module or interrupting service
 Enables easier pair identification and troubleshooting
 Requires minimal training

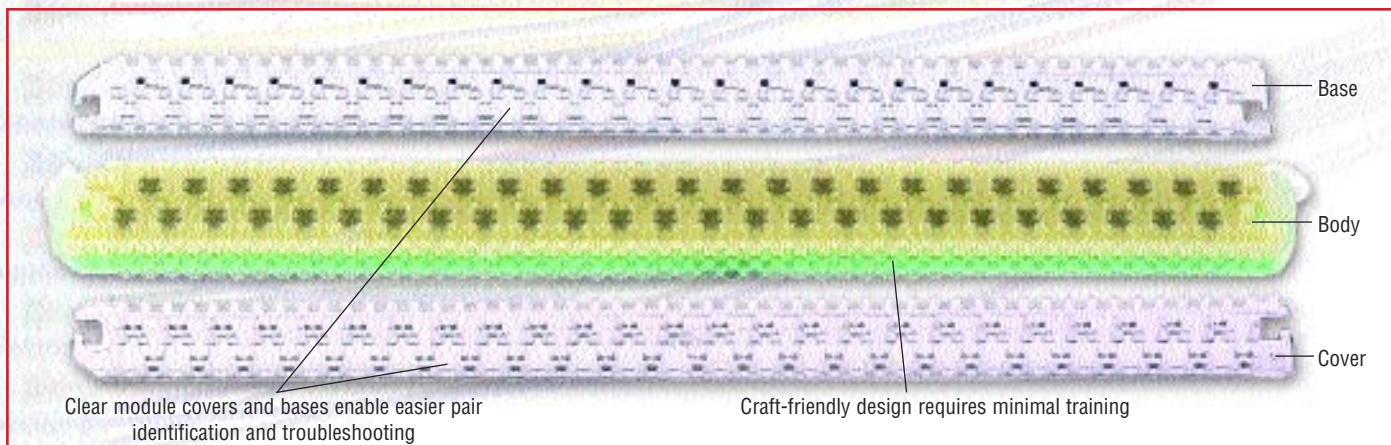
* Applies to 3M™ MS2™ Super-Mini Connector Module 4000-G/TR and 3M™ MS2™ Super-Mate Bridge Module 4005-GBM/TR



3M MS2 Super-Mini Connector Module 4000-G/TR



3M MS2 Super-Mate Bridge Module 4005-GBM/TR



3M™ MS2™ Super-Mini Half-Tap Connector Module 4008-G/TR

3M™ MS2™ Connector Modules 4000/4005/4008 Series Ordering Information

Product Number	Description	Packaging kg (lbs.)/cs.	Min. Order	UPC
4000-G/TR	Super-Mini	24/bag, 120/case Module (Gelled Transparent)	120 3.7 (8.3)	051138-70906
4000-GT/TR	Super-Mini	24/bag, 120/case Module (Gelled Transparent)	120 3.7 (8.3)	051138-88337
4008-G/TR	Super-Mini	24/bag, 120/case Half-Tap Module (Gelled Transparent)	120 3.7 (8.3)	051138-89336
4005-GBM/TR	Super-Mate	24/bag, 120/case Bridge Module (Gelled Transparent)	120 3.7 (8.3)	051115-15064
4005-GBM//TR/NB	Super-Mate	24/bag, 120/case Bridge Module (Gelled Transparent-No Blade Version)	120 3.7 (8.3)	051115-16181

To order or for more information, please contact your local 3M Sales Representative or call 3M at 1-800-426-8688.

3M and MS2 are trademarks of 3M Company.

Category 5 and Cat. 5 reference the specification defined by ANSI/TIA/EIA-568-A.

Note: For environments that require frequent re-entries for splicing, 3M recommends the 4000-DWP System. Designed specifically for encapsulated PIC plant applications, the 4075-S Sealant Box helps protect the connection from degradation caused by chemical reactions by filling the module, wire channels and test ports with a water-resistant sealant, simplifying rework and re-entry into an encapsulated splice.

In applications requiring greater water ingress protection, 3M recommends using dry 3M™ MS2™ 4000 Series Pluggable Modules in 3M™ MS2™ Sealant Boxes as an alternative to gelled or encapsulated modules. Contact 3M at 1-800-426-8688 or on the web at www.3MTelecommunications.com for additional product information.



Communication Circuit Accessory
22H9

Also Classified by Underwriters
Laboratories, Inc. in accordance
with TIA/EIA 568-A,
Category 5 Transmission

Applies to 3M™ MS2™ Super-Mini Connector Module 4000-G/TR and 3M™ MS2™ Super-Mate Bridge Module 4005-GBM/TR

Important Notice

All statements, technical information, and recommendations related to 3M's products are based on information believed to be reliable, but the accuracy or completeness is not guaranteed. Before using this product, you must evaluate it and determine if it is suitable for your intended application. You assume all risks and liability associated with such use. Any statements related to the product which are not contained in 3M's current publications, or any contrary statements contained on your purchase order shall have no force or effect unless expressly agreed upon, in writing, by an authorized officer of 3M.

Warranty; Limited Remedy; Limited Liability.

This product will be free from defects in material and manufacture for a period of 12 months from the date of purchase. **3M MAKES NO OTHER WARRANTIES INCLUDING, BUT NOT LIMITED TO, ANY IMPLIED WARRANTY OF MERCHANTABILITY OR FITNESS FOR A PARTICULAR PURPOSE.** If this product is defective within the warranty period stated above, your exclusive remedy shall be, at 3M's option, to replace or repair the 3M product or refund the purchase price of the 3M product. **Except where prohibited by law, 3M will not be liable for any loss of damage arising from this 3M product, whether direct, indirect, special, incidental or consequential regardless of the legal theory asserted.**



Communication Markets Division
3M Telecommunications

6801 River Place Blvd.
Austin, TX 78726-9000
800/426 8688
Fax 800/626 0329
www.3MTelecommunications.com



10% Post-consumer waste paper

Litho in USA.

© 3M 2003 80-6111-3222-8 (10035.0) K/LITHO-2